



To strive to make the most competitive and highest quality products available. Traditional craftsmanship defines each product from wood and anthracite cookstoves to custom metal fabrication. With a goal of high efficiency and low maintenance, DS products are built to last a lifetime. With four divisions, Stove Manufacturing, Retail, Wholesale, and Custom Fabrication, DS strives for excellence in everything they produce.

**Which DS product is right for you?**

	First Floor	Basement	Whole Home	Forced Hot Air	Anthracite	Wood	Gas	Freestanding Unit	Hot Water Heating	Greenhouse / Shop
Anthra-Max	•	•	•		•			•		
Anthra-Max Fireplace Insert	•	•	•		•					
Anthra-Glo	•	•	•		•			•		
Aqua-Gem Boilers #1100, 3200, 4200		•	•		•				•	•
Aqua-Stoke		•	•		•				•	•
Comfort Max	•	•	•		•			•		
Ecomiser		•	•	•	•					•
EnergyMax #110	•	•	•		•			•		
EnergyMax #160		•	•		•			•		•
Gas Boiler		•	•				•		•	•
Gas Furnace		•	•				•			•
GH Blast					•	•		•		•
HeatRight		•	•		•			•		
HECO Cookstove	•		•		•	•		•		
Kozy-King		•	•	•	•					•
Power Boilers #5000, 6000, 7000					•	•			•	•
Stoker Furnace		•	•	•	•				•	•

**Things To Consider When Purchasing**

- Gas Boiler #GB-150.....
- LP Burner Assembly.....
- NG Burner Assembly.....
- Draft Hood.....
- B-Vent Chimney.....
  
- Boiler Controls:
- Expansion Tank.....
- Circulator Pump.....
- Zone Valves.....
- Mixing Valve.....
- Air Vents.....
- Feed Water Regulator.....
- CO & Smoke Alarm.....

Subtotal \_\_\_\_\_  
 Tax \_\_\_\_\_  
**Total** \_\_\_\_\_

DS2023

Prices are subject to change without notification

Authorized Dealer



# Gas Boiler

Model #GB-150



# Cold Spaces To Warm Embraces

In response to numerous requests from DS dealers, DS embarked on a comprehensive research and development endeavor in early 2017 to create the GB-150 Boiler. Following multiple test batches, the boiler underwent rigorous safety and efficiency testing in May 2019. Specifically designed for Gravity-Flow or Pump hot water systems, this boiler prioritizes ease of installation. With heat exchange tubes and stainless steel baffles, the GB-150 achieves optimal efficiency for a non-condensing gas unit. The GB-150 can be installed in homes, shops, and greenhouses.

## FEATURES

- Burns Liquid Propane or Natural Gas
- Robertshaw Valve / Standing Pilot
- Stainless Steel Burner Tubes
- 304 Stainless Steel Baffle w/ Heat Exchanger Tubes
- Over 5,000 sq. in. of Heat Exchange
- Non-Electric
- Gravity-Flow or Pump Systems
- Easy Access To Controls
- Insulated Metal Jacket
- Manufactured In Lancaster County, PA



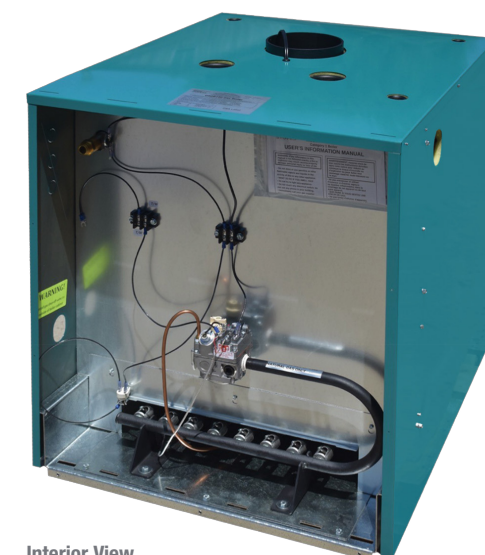
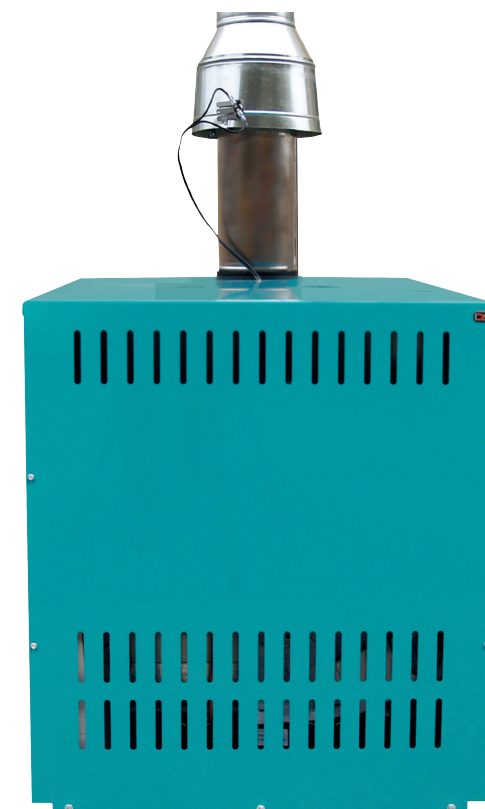
## SPECIFICATIONS

<b>Model Number</b>	<b>GB-150</b>
Fuel	LP or NG
Heating Area (Recommended)	1,500 - 5,000 sq. ft.
BTU (Approx)	150,000
Efficiency	83.8%
Top Exhaust	6"
Water Capacity	30 Gallons
Inlet / Outlet	2.00"
Gas Valve Hookup	1/2" NPT
Valve	Millivolt
Overall Size (WxDxH)	27" x 33" x 31.25"
Weight	750 lbs.
U.L. Tested*	Yes
Insulated Jacket	Standard
Warranty	5 Year Limited 1 Year Valves 1 Year Burner 1 Year Controls

## CLEARANCE FROM COMBUSTIBLES

Front	18"
Back	16"
Right Side	4"
Left Side	6"
Ceiling	24"
Single Wall Stovepipe	6"
Draft Hood	6"
Hot Water Pipes	1/2"

All units require a Class "B" all fuel chimney.  
Installation must conform to state and local codes.  
\* Safety Tested to Ansi Z21.13-2017, CSA 4.9-2017, CSA B51 Standards



Interior View